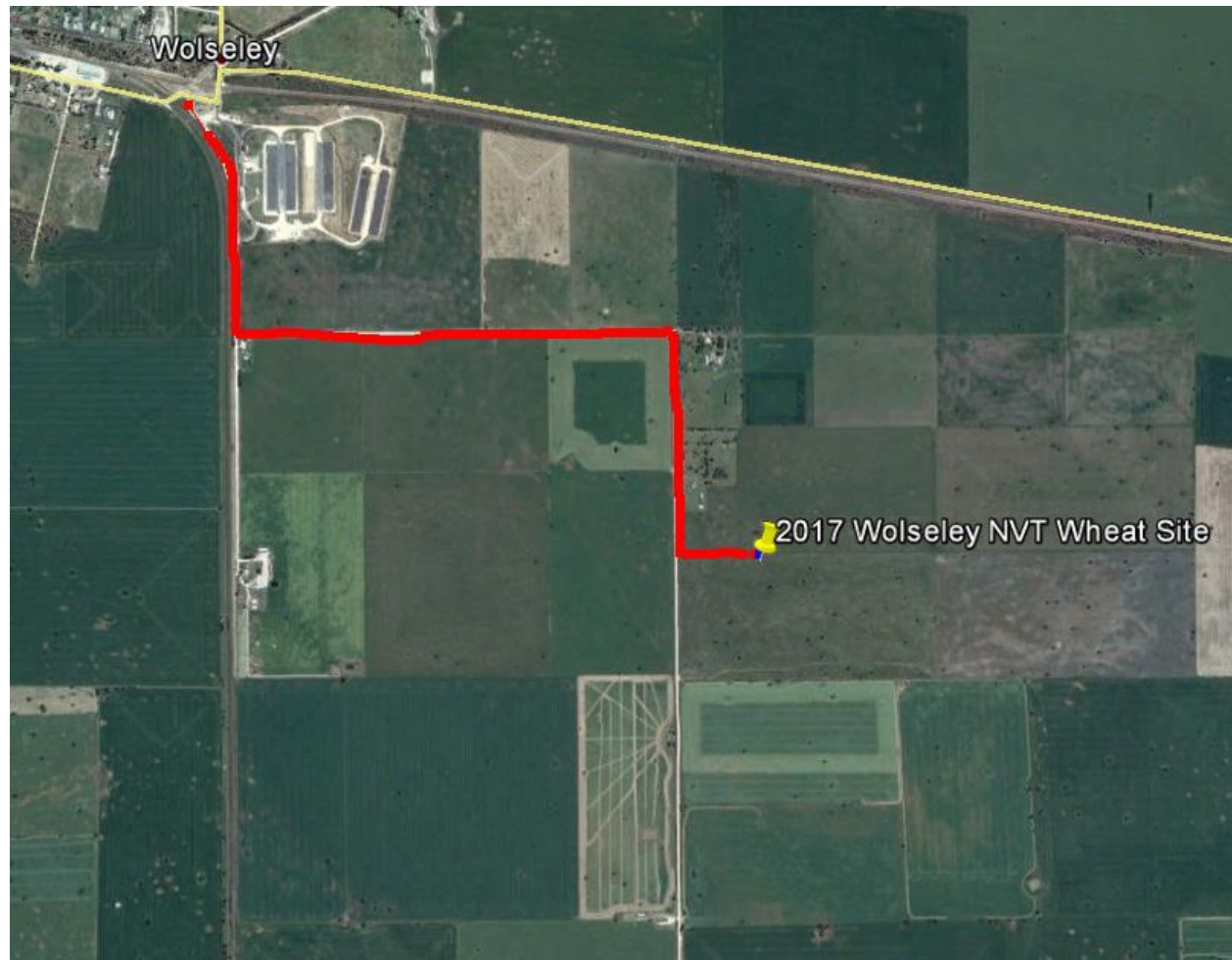


2017 Wolseley NVT Main Wheat Site

Co-Operator: Peter McLellan 0428 931 402

Latitude -36.380195

Longitude 140.931313



From Railway Tce, turn right on Ridgeway Rd, after 140m turn right towards Snoad Rd, turn left onto Snoad Rd, after 800m turn left onto Choopawhip Rd, travel on Choopawip Rd with trial site on left.

Wolseley Cereal Site 2017

Buffer 1		Buffer 97
NVT Main Wheat		
48 Buffer		144 Buffer
Buffer 1		Buffer 31
MFMG Cereal Challenge		
15 Buffer		45 Buffer